

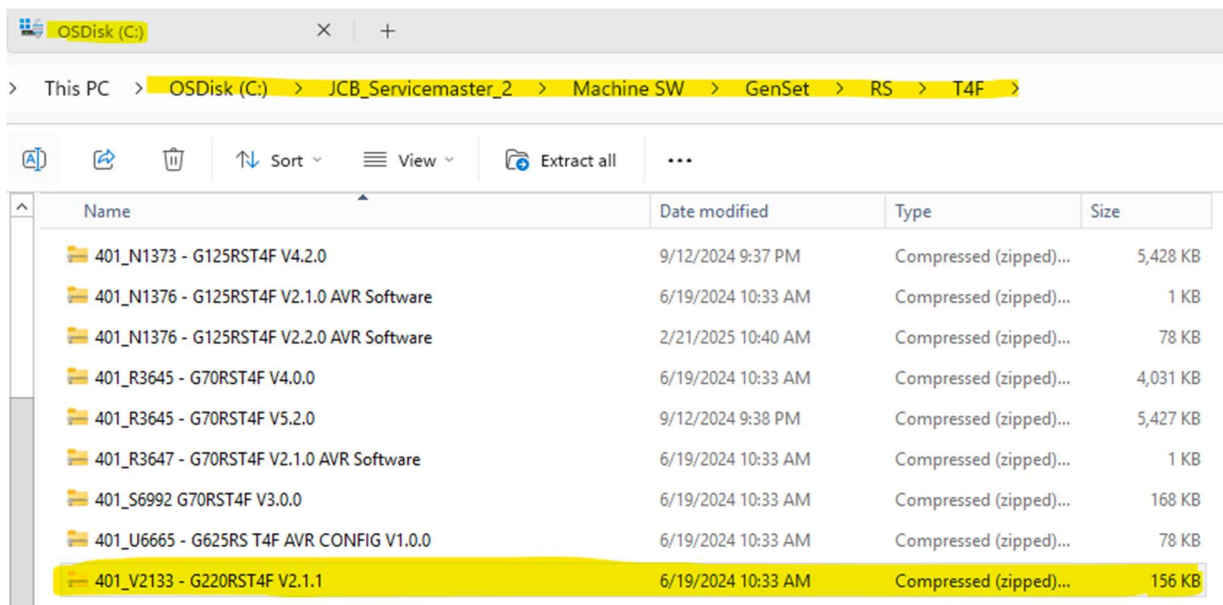
## TC004: DSE 8610 – Loading Master Backup Files

DeepSea 8610 controllers need to be programmed for the generator model they are being used on when:

- You install a replacement 8610.
- Unsure that the settings in the 8610 are correct.
- Troubleshooting a generator controller related issue.

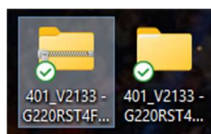
**Step 1:** Have the model specific DSE 8610 settings file supplied by JCB. These are located here if you have Servicemaster loaded on your computer: **C:\JCB\_Servicemaster\_2\Machine SW\GenSet\RS\T4F**

*Note: Photos below are for reference only make sure to use the correct! Use the PDF at the bottom of this folder to get the correct file.*



*Screenshot 1: JCB Generator Controller File folder within Servicemaster.*

**Step 2:** Make sure to right click on the file and click **Copy** to copy the file. Then on your desktop right click and choose **Paste** the correct file to your desktop, then right-click and choose **Extract All**.

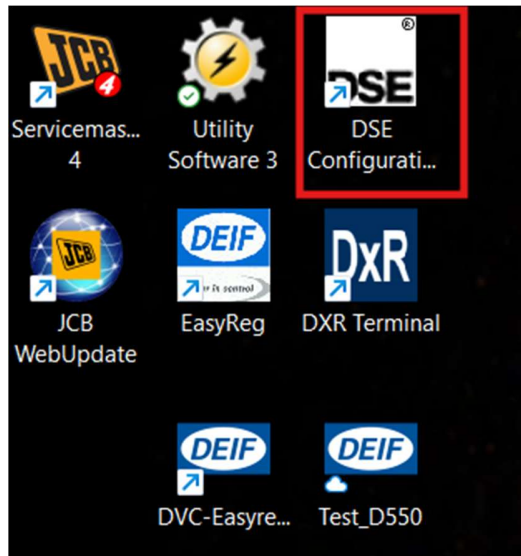


*Screenshot 3: Example of the compressed folder on left (zipper) and extracted file on right.*

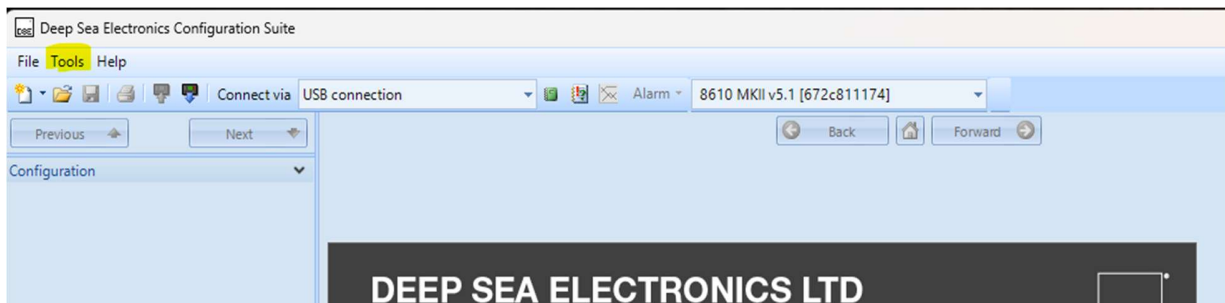
# TECH TIP – Power Products Controller



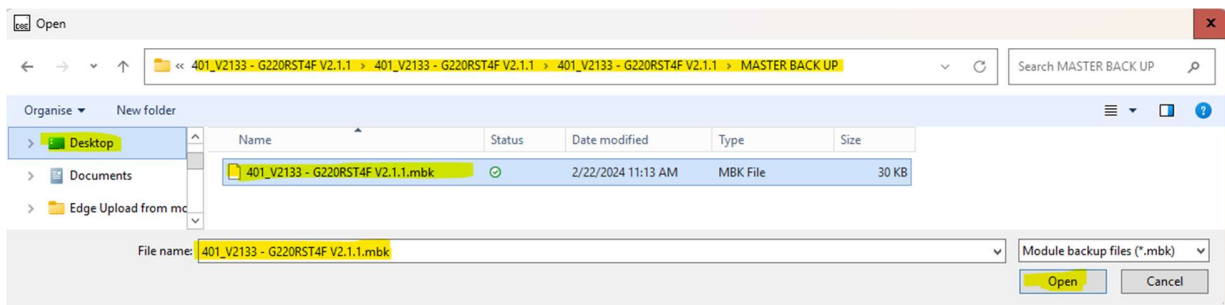
**Step 3:** Open DSE configurator using the icon.



**Step 4:** Click *Tools* then click *Restore Backup*.



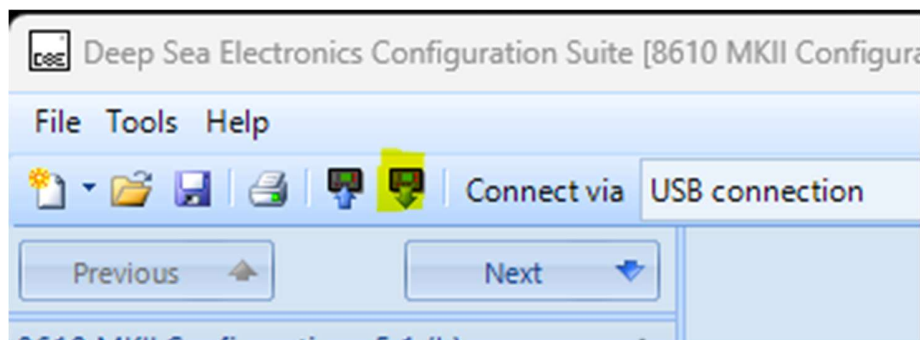
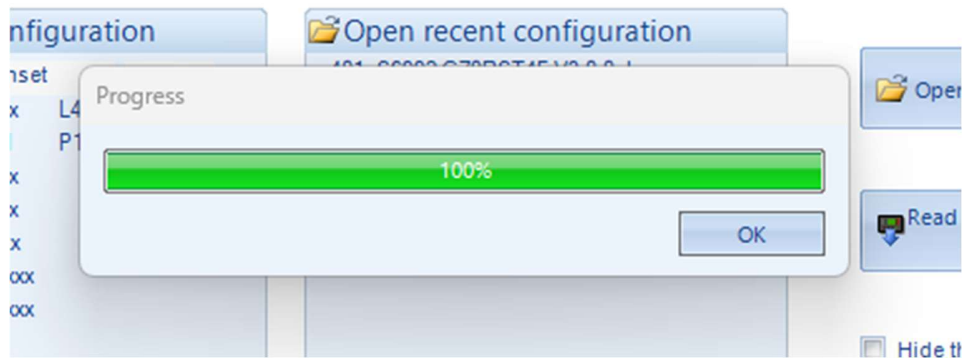
**Step 5:** Navigate to the folder you placed on the desktop, then click till you get into the MASTER BACK UP folder. File should have .mbk at the end. Click the file and then click open.



## TECH TIP – Power Products Controller



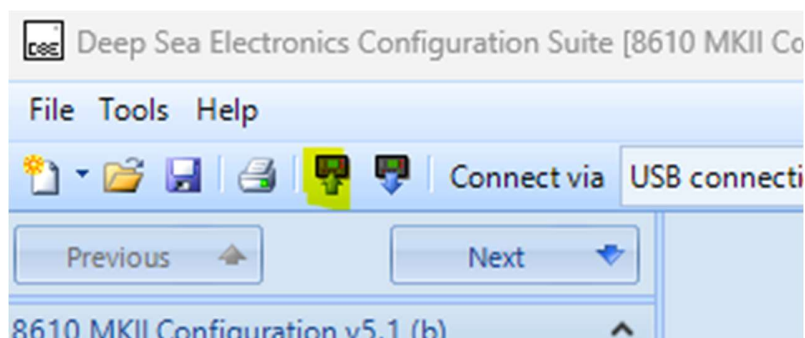
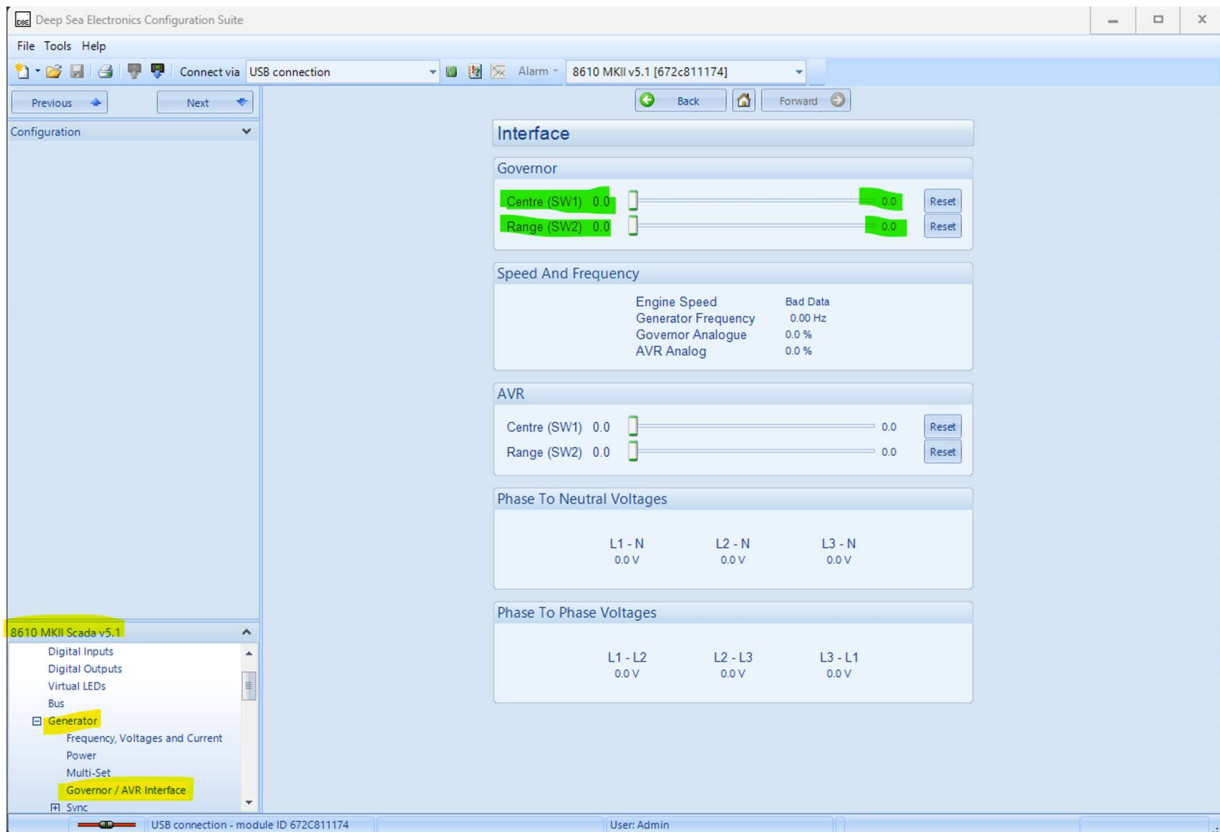
**Step 5:** Once complete you should see the following and then click the **Read From Module Icon** in second photo.



## TECH TIP – Power Products Controller



**Step 6:** Navigate the software to the SCADA screens by clicking on **SCADA, Generator, Governor/AVR Interface**. SW1 and SW2 should be set to 5.0 and 5.0. If they are set to 0.0 and 0.0 slide each slider to 5.0 and 5.0. Then click Write to Module button.



**Step 7:** Test run unit in all voltage modes to confirm proper operation. Also check E-Stop and door switches for alarms.