

# TECH TIP – Power Products Controller



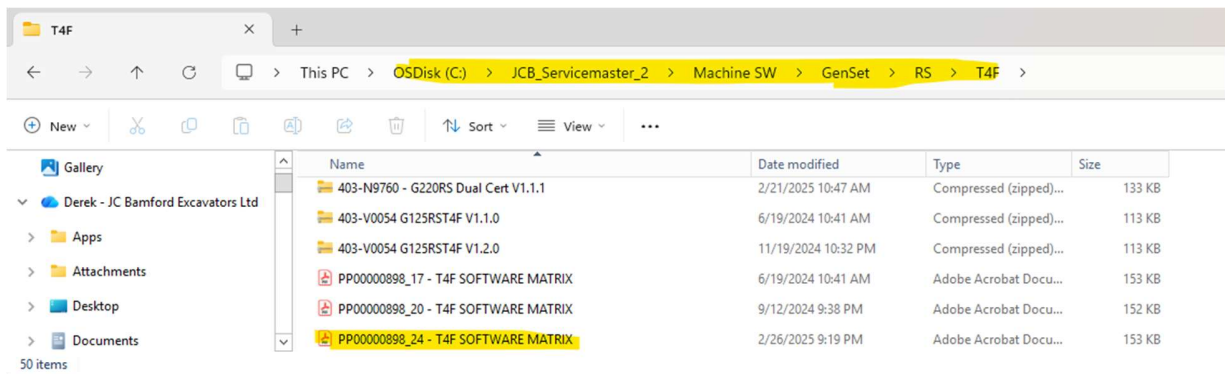
## TC003: DSE Controllers – Loading Firmware

DeepSea controllers will need the correct firmware loaded when:

- You program a new controller
- Unsure that the settings are correct and planning to load new Back Up or Settings files.
- Troubleshooting a generator controller related issue.

**Step 1:** Using the PDF located here if you have Servicemaster loaded on your computer:  
**C:\JCB\_Servicemaster\_2\Machine SW\GenSet\RS\T4F** look for the correct Generator Model and Controller you are needing to update the firmware on in the “Software Matrix.”

*Note: Photos below are for reference only make sure to use the correct! Use the PDF at the bottom of this folder to get the correct file.*



*Screenshot 1: JCB Generator T4F Software Matrix PDF within Servicemaster.*

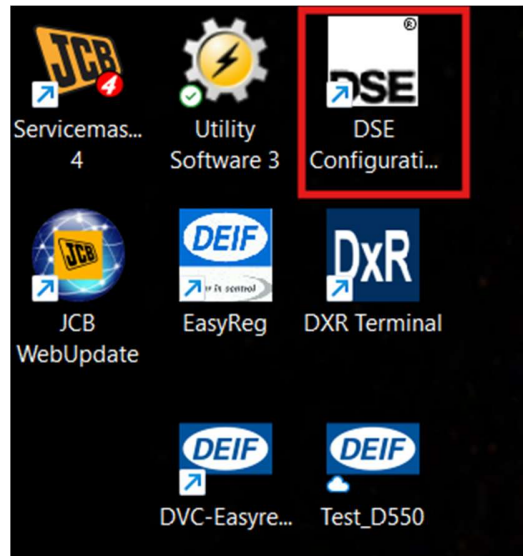
Generator Model	Device	Software Package	Controller Firmware Version	Configuration Software Version	PLM Released	Part Number
G70RST4F	AGC150	USW3	agc15x_g59e2d5b3_v1200.15x	V5.2.0		401/R3645
	DER1	DXR Terminal	G70T4F DSR.set	V2.1.0		401/R3647
	DSE7310	DSE Configuration Suite	V7.3	V2.0.0		401/S6992
	DER1 (EQS)	DXR Terminal	G70_ES_DER1.dat	V1.0.0		402/X1633
	DSE7310 (EQS)	DSE Configuration Suite	V7.3	V1.0.0		402/X1552

*Screenshot 2: Example of the G70 DSE 7310 controller and FW version highlighted in Green.*

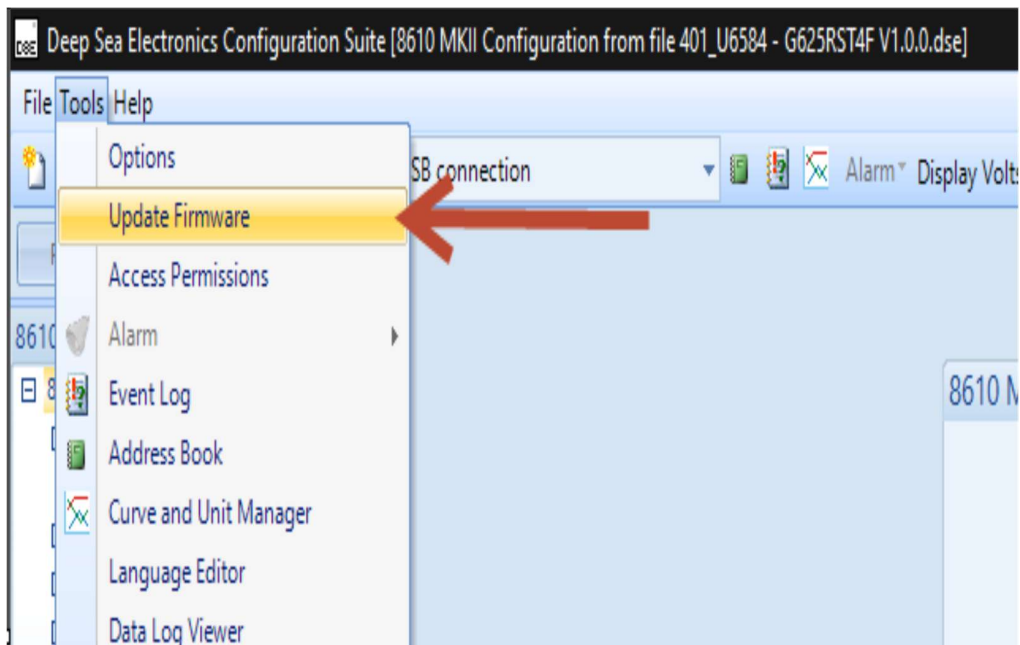
## TECH TIP – Power Products Controller



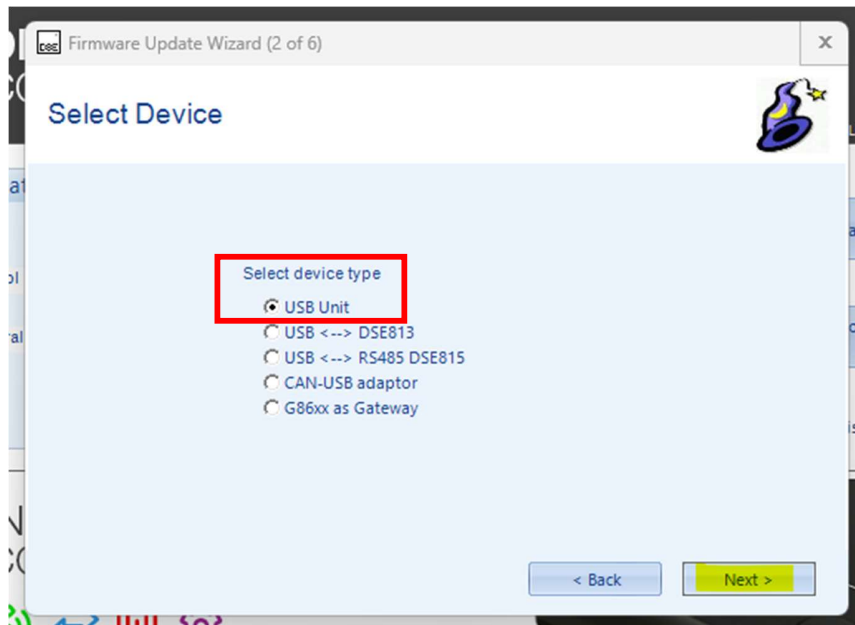
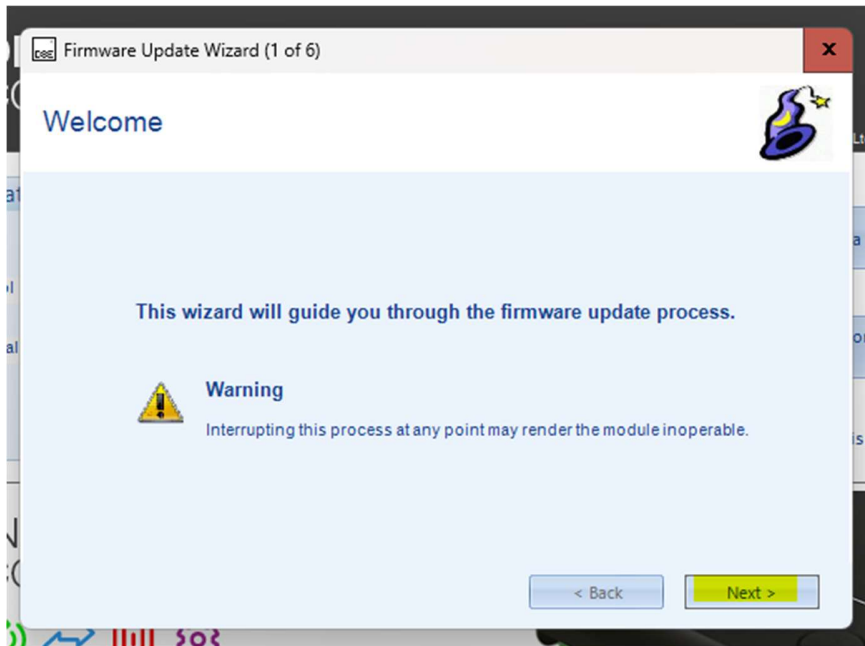
**Step 3:** Open DSE configurator using the icon.



**Step 3:** Click **Tools** then click **Update Firmware** and follow the Firmware Update Wizard, clicking **Next** when highlighted in yellow.

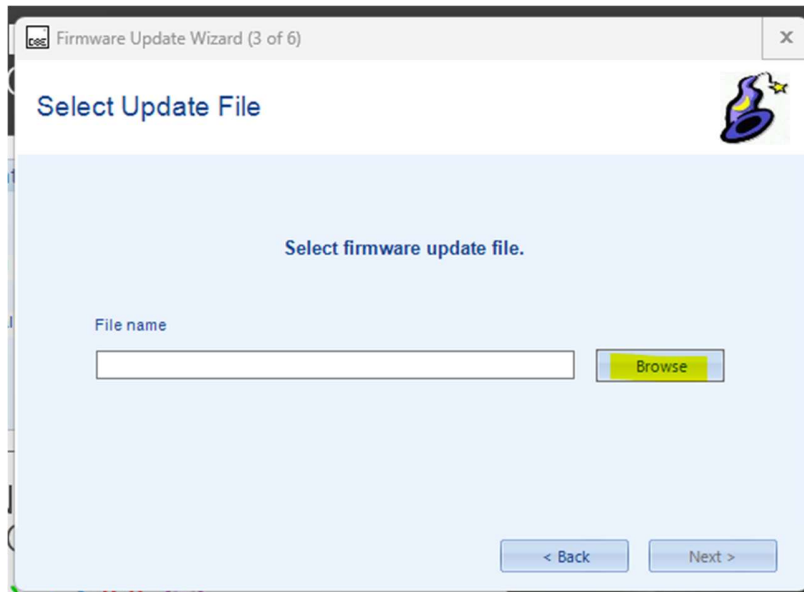


# TECH TIP – Power Products Controller

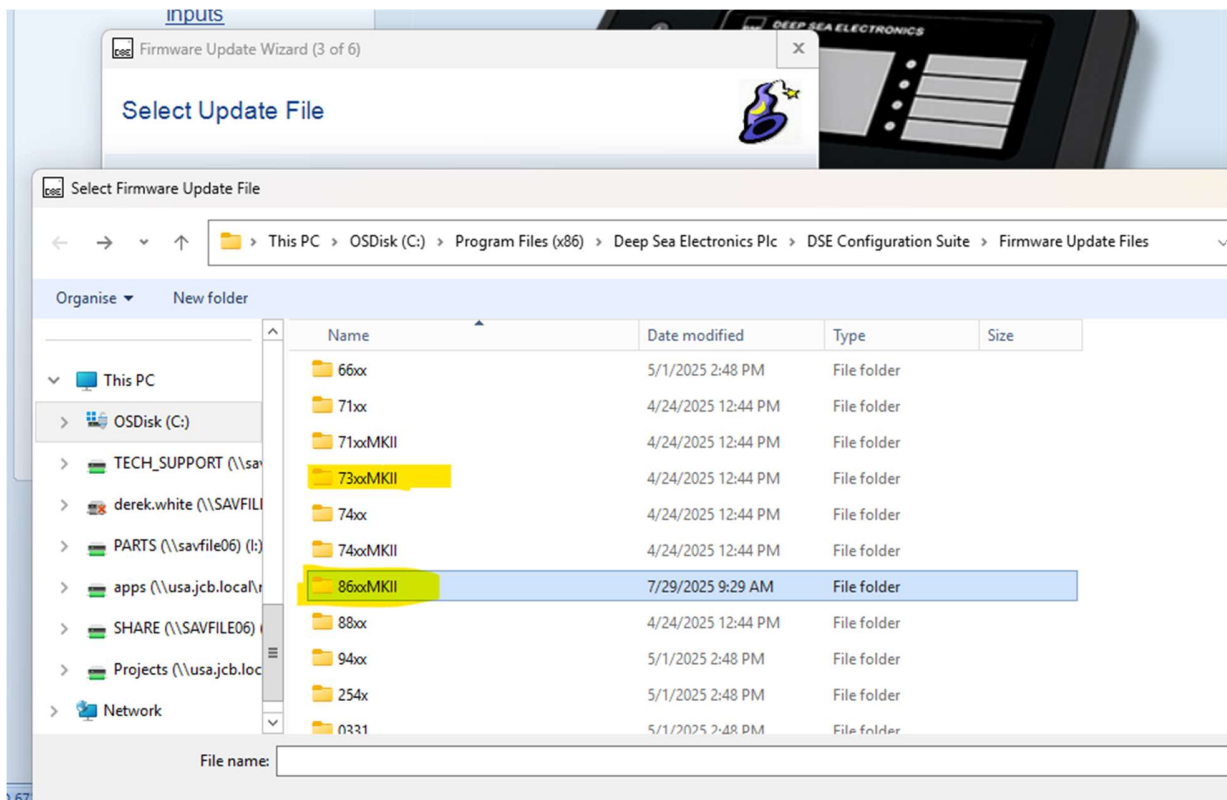


*Screenshot 3: Confirm **USB Unit** is selected as shown by the red box.*

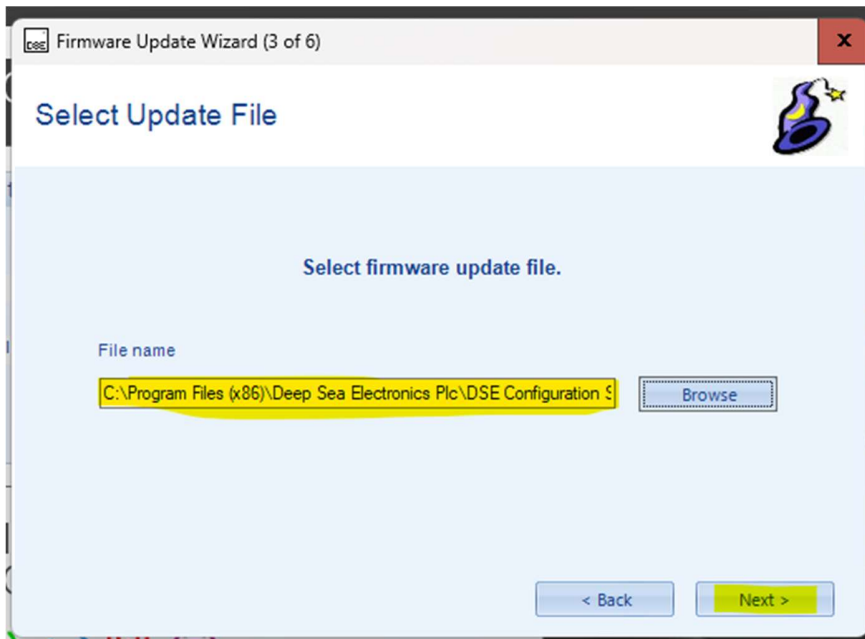
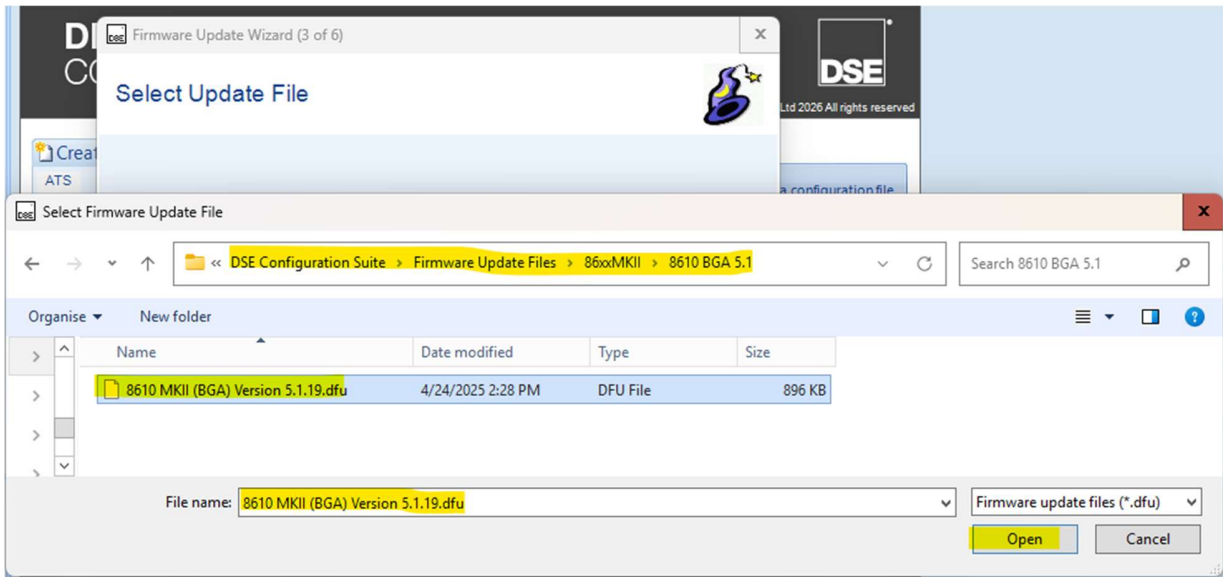
# TECH TIP – Power Products Controller



**Step 4:** Navigate to the correct control folder 73xxMKII or 86xxMKII depending on your controller and then select the correct Firmware as found in the “Software Matrix” from Step 1. (See Note at Bottom of this document for 8610 MKII FW)



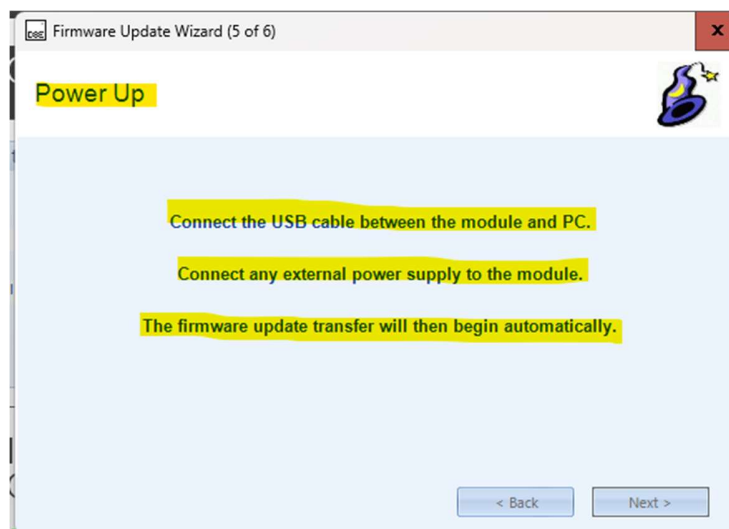
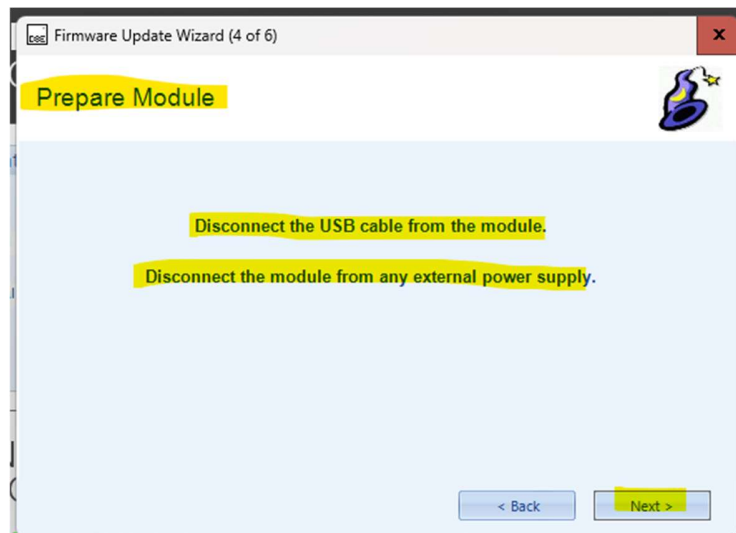
# TECH TIP – Power Products Controller



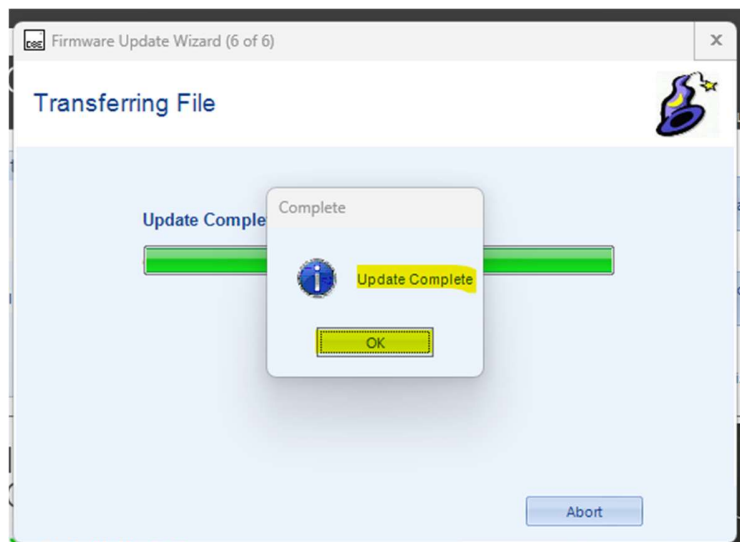
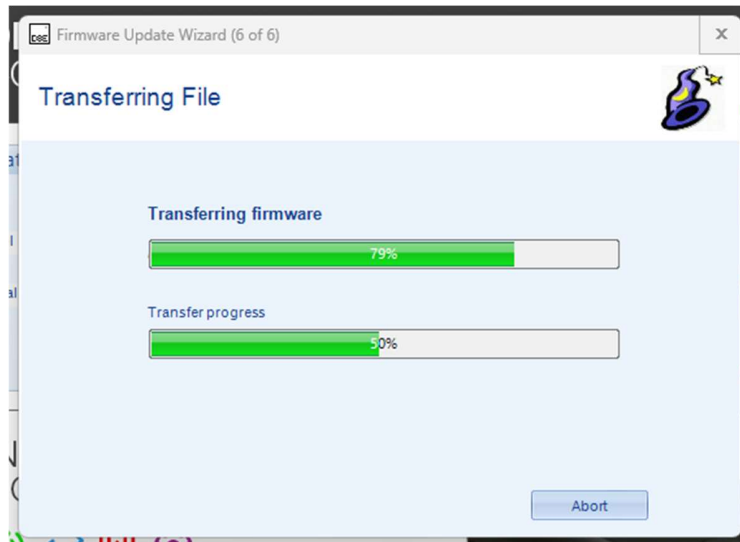
## TECH TIP – Power Products Controller



**Step 5:** Continue to follow the prompts by disconnecting the USB and Power, then reconnecting both when asked. The Wizard will start to update the FW on the controller... do not disconnect power or the USB connecting during this process.



## TECH TIP – Power Products Controller



**Step 7:** Next step will be to load either the Master Backup (8610 Only) or Settings File (7310) into the controller.

## TECH TIP – Power Products Controller



**NOTE:** If have an 8610 MKII you will need to identify the controller part number from the back. Below you can see an example of the data tag with part number and FW type to use.

- **Standard** FW if 8610-004
- **BGA** FW if 8610-005

