

TECH TIP – Power Products Controller

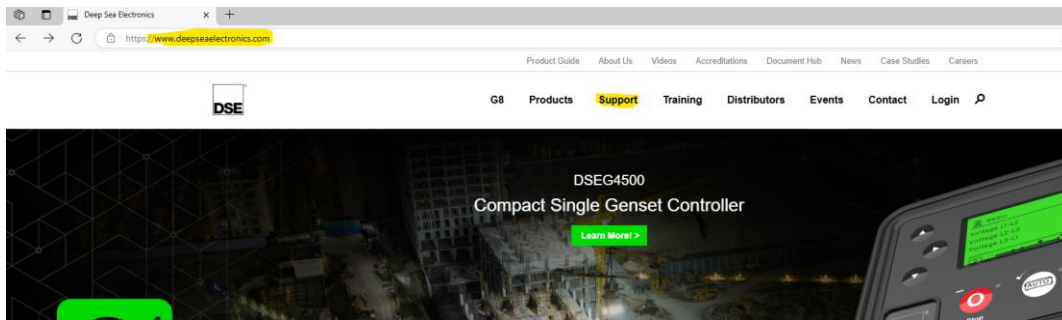


TC001: Deep Sea Configuration Suite Setup

You will need to install the Deep Sea Configuration Suite when needing to perform the following actions with a Deep Sea controller:

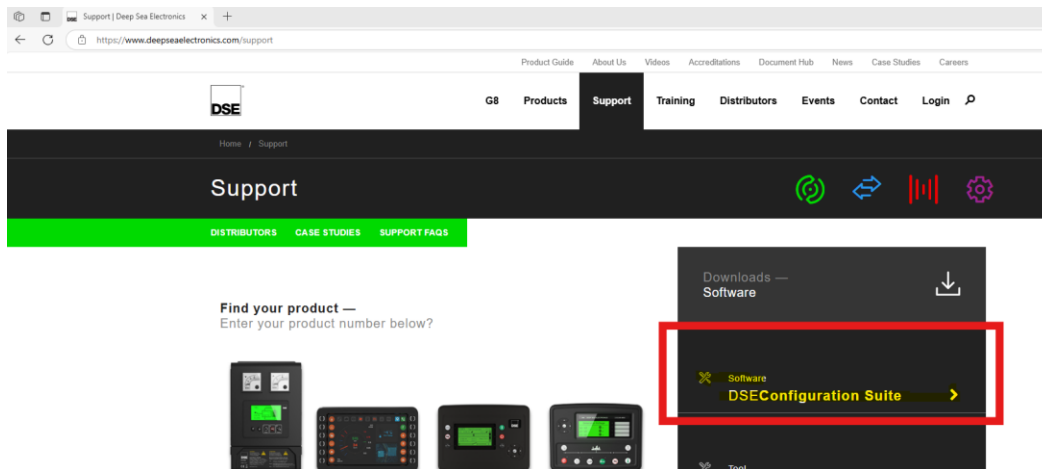
- Programming a new controller - ***These come unprogrammed for JCB generators.***
- Uploading Factory Settings.
- Troubleshooting Controller or Generator Issues.

Step 1: Open your web browser and go to Deep Sea’s website: www.deepseaelectronics.com. Then Click **Support** in the top row as highlighted below.



Screenshot 1: Deep Sea’s homepage

Step 2: On the Support page click the box with **DSEConfiguration Suite**.

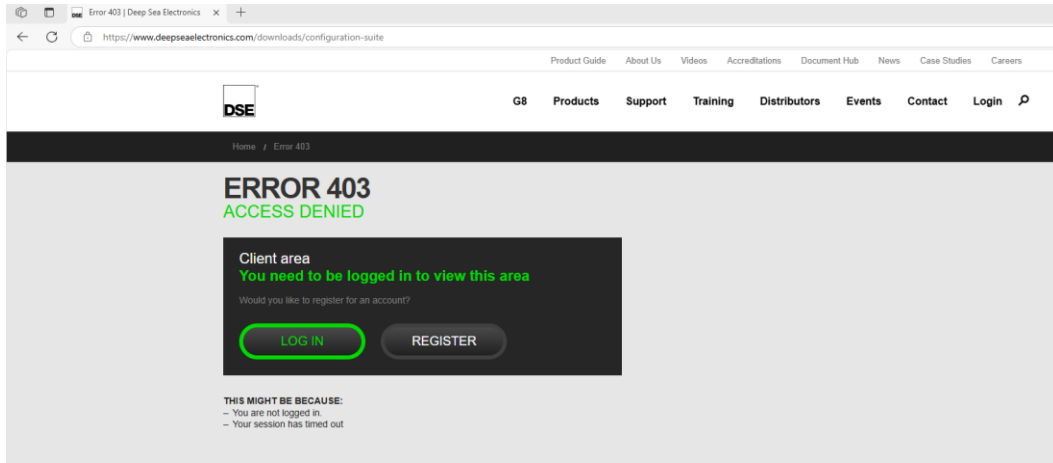


Screenshot 2: Deep Sea Support page with DSEConfiguration Suite highlighted.

TECH TIP – Power Products Controller

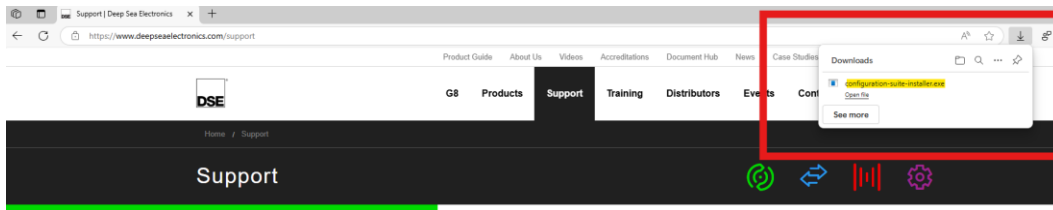


Step 3: Log In or Register for a DSE Account. Once you “Log In” click **Support, DSEConfiguration Suite** again as in Step 2.



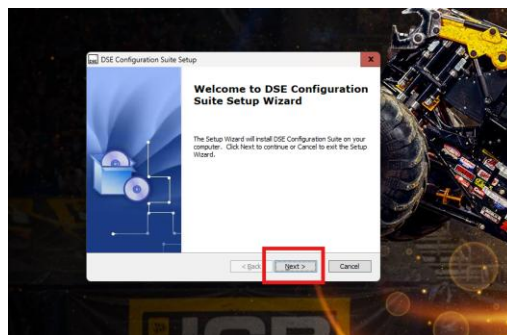
Screenshot 3: You will need to log in if you already have a Deep Sea account or you will need to register for one. It's free to register.

Step 4: Once you click on DSEConfiguration Suite it will download the installer to your Downloads folder on your computer. Double-Click the file once downloaded.



Screenshot 4: File downloaded and ready to install.

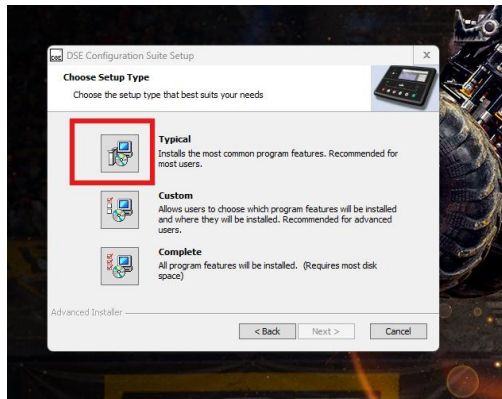
Step 5: Once you click on DSEConfiguration Suite it will download the installer to your **Downloads** folder on your computer. Once downloaded, double-click the file and it will open the setup file. Click **Next** to continue.



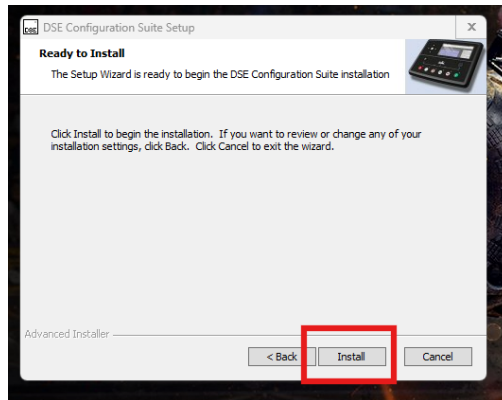
TECH TIP – Power Products Controller



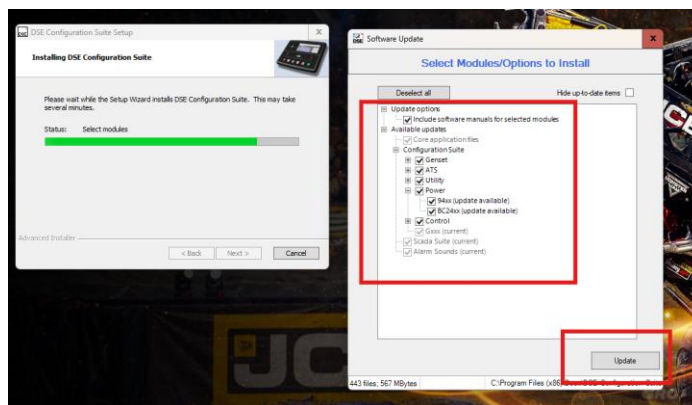
Step 6: Click the box beside *Typical*



Step 7: Then click *Install*.



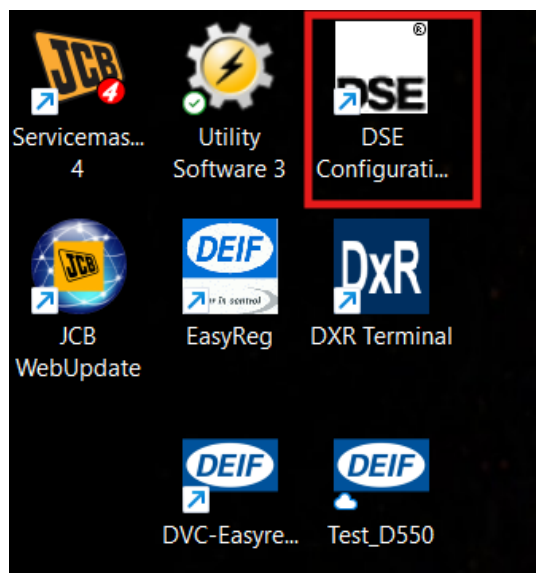
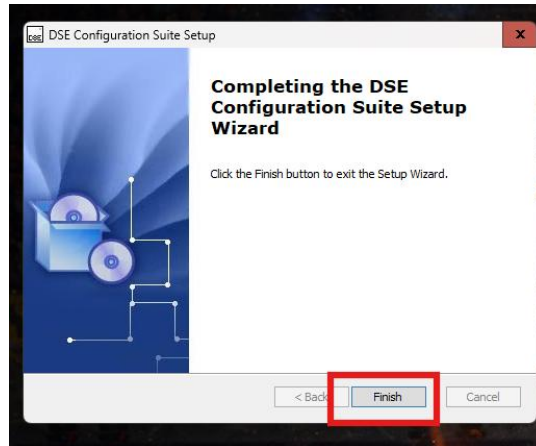
Step 8: Select all check boxes and click *Update* at the bottom. It will take about 10 minutes to install from here.



TECH TIP – Power Products Controller



Step 9: Click *Finish* to complete the installation. You should also have an icon on your desktop that looks like the image below. Double-click the icon to start the program.



Screenshot 10: DSE Configuration Suite Desktop Icon.