



SCISSOR LIFTS

QUICK REFERENCE GUIDE

This Quick Reference Guide DOES NOT replace the Operators Manual. You MUST read ALL the disclaimers and safety and other instructions in the Operators Manual before initially operating this product. Accordingly, no legal claims can be entertained based on the data, illustrations or descriptions in this Quick Reference Guide.

Static Dimensions

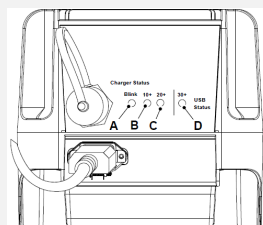
DIMENSIONS - ELECTRIC DRIVE

Model		S1932E	S2632E	S2646E
Max. platform height	m (ft-in)	5.71 (18-9)	7.92 (26)	7.90 (25-11)
Max. working height	m (ft-in)	7.71 (24-9)	9.92 (32)	9.90 (31-11)
Extension outreach	m (in)	0.9 (35)	0.9 (35)	0.9 (35)
Overall length (stowed)	m (ft-in)	1.78 (5-10)	2.39 (7-10)	2.39 (7-10)
Overall width (stowed)	m (ft-in)	0.82 (2-8.2)	0.83 (2-8.5)	1.18 (3-10.5)
Overall height (stowed, guardrail folded)	m (ft-in)	1.85 (6-1)	1.96 (6-5)	1.96 (6-5)
Overall height (stowed, guardrail unfolded)	m (ft-in)	2.12 (6-11)	2.33 (7-8)	2.35 (7-8)
Overall weight	kg (lb)	1590 (3505)	2180 (4806)	2663 (5871)

DIMENSIONS - ELECTRIC DRIVE

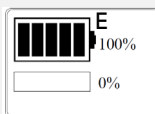
Model		S3246E	S4046E	S4550E
Max. platform height	m (ft-in)	9.68 (31-9)	11.9 (39-0)	13.8 (45-3)
Max. working height	m (ft-in)	11.68 (37-9)	13.9 (45-0)	15.8 (51-3)
Extension outreach	m (in)	0.9 (35)	0.9 (35)	0.9 (35)
Overall length (stowed)	m (ft-in)	2.39 (7-10)	2.39 (7-10)	2.76 (9-1)
Overall width (stowed)	m (ft-in)	1.18 (3-10.5)	1.18 (3-10.5)	1.27 (4-2)
Overall height (stowed, guardrail folded)	m (ft-in)	1.86 (6-1)	1.98 (6-6)	2.20 (7-3)
Overall height (stowed, guardrail unfolded)	m (ft-in)	2.48 (8-2)	2.60 (8-6)	2.60 (8-6)
Overall weight	kg (lb)	2866 (6318)	3070 (6768)	3593 (7921)

Charge Level and Charging



- A. 50%
- B. 70%
- C. 100%
- D. USB status

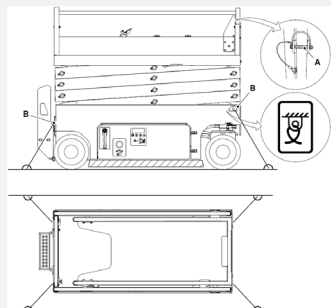
If A, B, and C are blinking together, see Manual for fault indicator



Platform Control Display

E. Battery Level

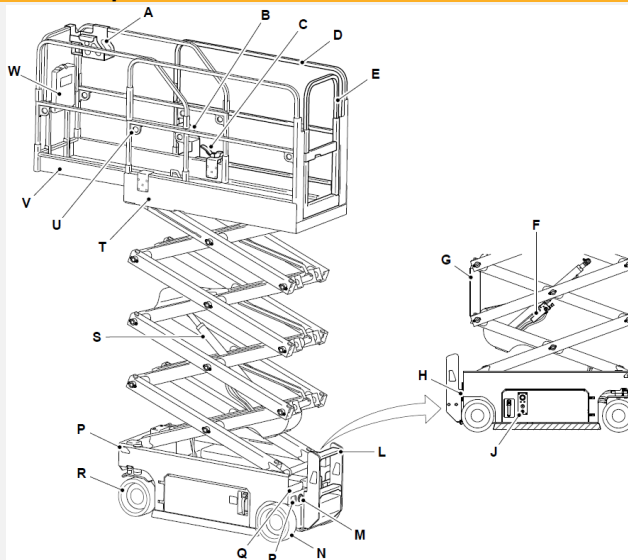
Tie Down Points



- A. Lock pins
- B. Tie down points

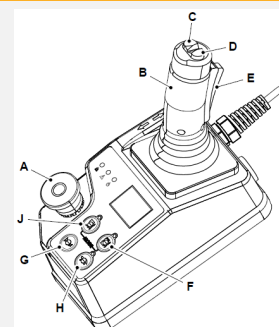
1. If required, remove lock pins from all four corners of platform and fold down guardrails.
2. Use tie down points to secure machine

Main Components

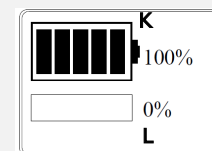


- A. Platform controller
- B. AC (Alternating Current) Power socket (option)
- C. Extension platform pedal
- D. Guardrail
- E. Platform door
- F. Lift control valve
- G. Safety strut
- H. Power to platform plug
- J. Switch panel, key switch and emergency stop
- L. Ladder
- M. Charging plug
- N. Rear wheel
- P. Lifting/ tie-down point
- Q. Forklift pocket
- R. Lifting/ tie-down point
- S. Lift ram
- T. Main platform
- U. Safety harness fastening point
- V. Platform extension
- W. Operator manual holder

Platform Controller



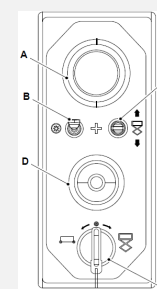
- A. Emergency stop switch
- B. Joystick (forwards/backwards)
- C. Turn left switch
- D. Turn right switch
- E. Safety trigger/enable switch



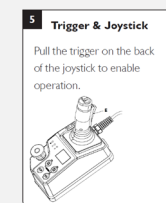
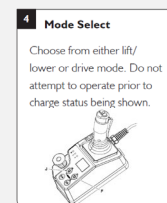
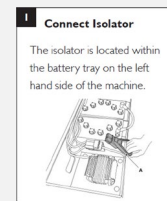
- F. Drive mode
- G. Horn button
- H. Speed button
- J. Lift mode
- K. Battery Level
- L. Load management indicator

Ground Control

- A. Ground display
- B. Controls enable button
- C. Up/ down switch
- D. Emergency stop switch
- E. Ground/ platform control switch



Start Up Sequence



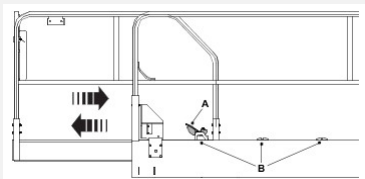
Access additional information

www.servicepro.jcb.com



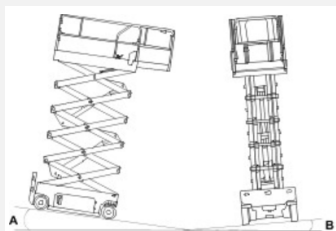
Extending and Retracting Platform

- A. Pedal
- B. Fixing positions



1. Press the pedal.
2. Hold and push the extension platform guard rail.
3. Release the pedal when the rail is in one of the three fixing positions. Make sure that it is engaged correctly.
4. Press the pedal and pull the extended guardrail to retract the platform

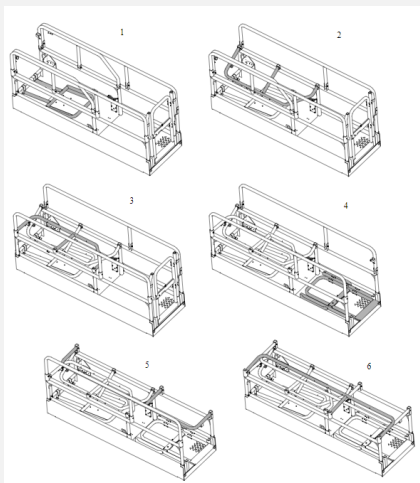
Driving on Slopes



Do not exceed slopes when platform is raised:

- A. Front/back slope 3°
- B. Side slope 1.5°

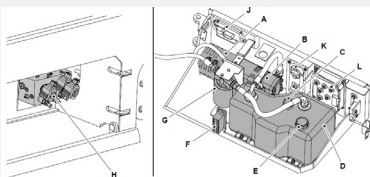
Folding and Unfolding Guardrails



1. To fold down each guardrail, remove the lock pin for that guardrail.
2. Take a firm hold on the top of the guardrail, carefully lower it until it is fully folded.

Service Points

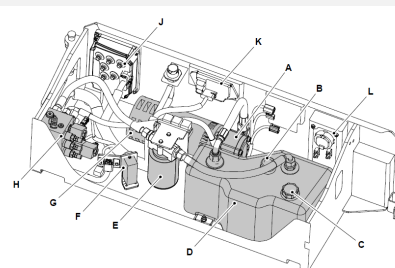
Hydraulic Compartment



- G. Hyd oil filter
- H. Valve block
- J. Electronic control unit
- K. Ground control panel
- L. Motor controller

S1932E

- A. Motor
- B. Gear pump
- C. Hyd breather
- D. Hyd tank
- E. Hyd oil filter
- F. Secondary fuses

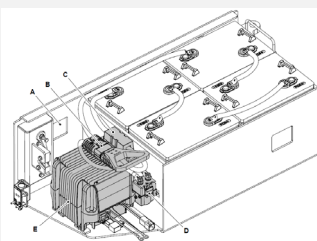


- J. Motor controller
- K. Electronic control unit
- L. Ground control panel

All models excluding S1932E

- A. Gear pump
- B. Hyd breather
- C. Hyd oil filter cap
- D. Hyd tank
- E. Hyd oil filter
- F. Secondary fuses
- G. Motor
- H. Valve block

Battery Compartment

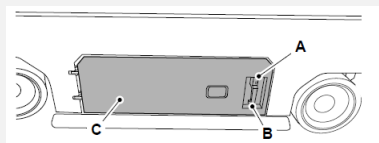


Lead Acid Battery

- A. Battery charger status sight hole
- B. Battery isolator
- C. Primary fuses (200A rating)
- D. DC contactor
- E. Battery charger

Access Covers

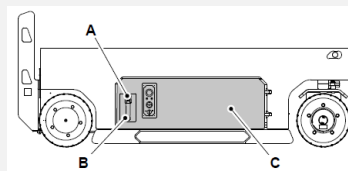
Battery Cover



- A. Lock
- B. Handle
- C. Cover

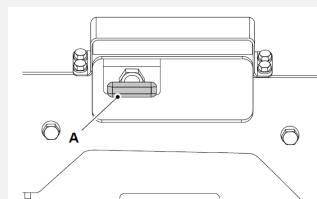
Hydraulic Compartment Cover

- A. Lock
- B. Handle
- C. Cover



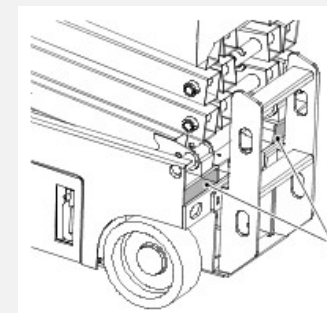
Lower the Platform (Emergency Operation)

A. Emergency lowering lever



If the machine becomes disabled, platform can still be lowered by pulling on emergency lever

Lifting by Forklift



A. Forklift slots

Lifting by Hoist

Center of Gravity Location

Machine model	X axis mm (ft-in)	Y axis mm (ft-in)
S1932E EDRV	586 (1-11)	502 (1-8)
S2632E EDRV	907 (3)	658 (2-2)
S2646E EDRV	841 (2-9)	689 (2-3)
S3246E EDRV	844 (2-9)	688 (2-3)
S4046E EDRV	842 (2-9)	721 (2-4)
S4550E EDRV	1070 (3-6)	780 (2-7)

- X. X axis distance
- Y. Y axis distance

