



# JS370

## QUICK REFERENCE GUIDE

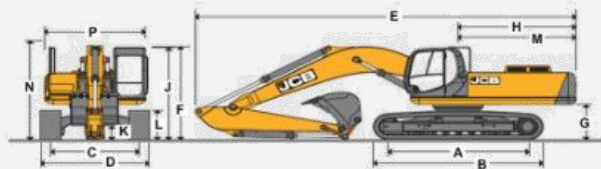
This Quick Reference Guide DOES NOT replace the Operators Manual. You MUST read ALL the disclaimers and safety and other instructions in the Operators Manual before initially operating this product. Accordingly, no legal claims can be entertained based on the data, illustrations or descriptions in this Quick Reference Guide.

### Static Dimensions

#### Monoboam

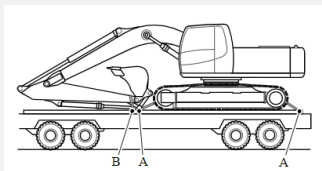
Machine model		JS370	
		NLC	LC
A	Track length on ground	ft-in	13-2
B	Undercarriage overall length	ft-in	16-3
C	Track gauge	ft-in	7-10 8-6
D	Width over tracks (2' shoes)	ft-in	9-10 10-6
	Width over tracks (2'4" shoes)	ft-in	10-2 10-10
	Width over tracks (2'7" shoes)	ft-in	10-6 11-2
	Width over tracks (2'11" shoes)	ft-in	10-10 11-6
G	Counterweight clearance	ft-in	4
H	Tailswing radius	ft-in	11-9
J	Height over cab	ft-in	10-6
K	Ground clearance	ft-in	1-9
L	Track height	ft-in	3-4
M	Tail length	ft-in	11-8
N	Height over grab rail	ft-in	11
P	Width of superstructure	ft-in	9-10

Machine model		JS370				
		ft-in	7-3	8-8	10-7	13-3
E	Dipper lengths	ft-in	37-7	37-2	36-11	37-2
F	Transport length	ft-in	11-8	11	11	12-2

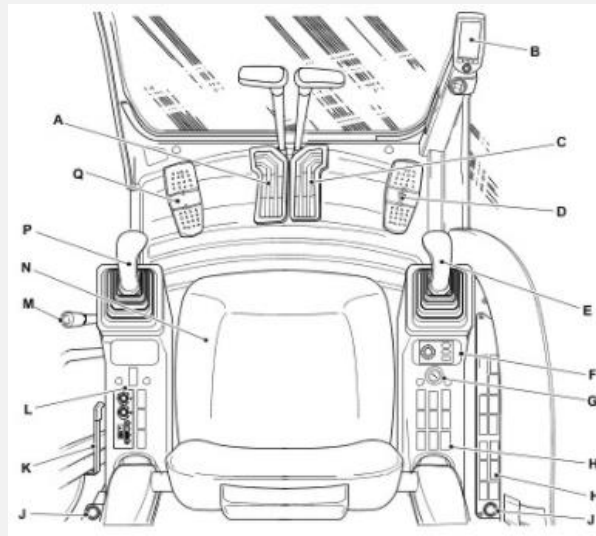


### Tie Down Points

- A. Undercarriage securing method
- B. Dipper securing method



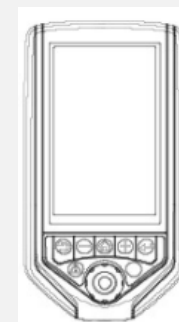
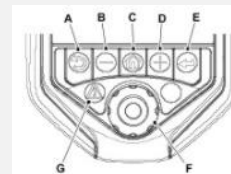
### Cab and Switch Panel



- A. Left hand track control
- B. DECU
- C. Right hand track control
- D. Optional circuit pedal
- E. Right joystick
- F. Machine power band controller
- G. Ignition switch
- H. Right switch console
- J. 12V auxiliary power socket
- K. Door lever
- L. Left switch console
- M. Controls isolation lever
- N. Seat
- P. Left joystick
- Q. TAB

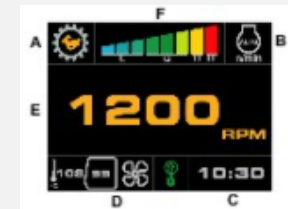
### Instrument Panel

- A. Back button
- B. Minus button
- C. Home button
- D. Plus button
- E. Enter button
- F. Rotary control and select button
- G. Fault indicator



#### Operating Screen

- A. Travel speed
- B. Auto idle/Controls isolation
- C. Clock
- D. Inside/outside temperature, Fan speed, A/C
- E. Engine speed
- F. Power band



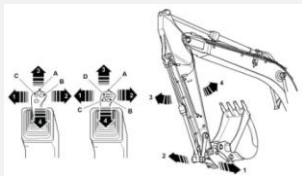
### Start Up Sequence

- 1 Insert Isolator Key (E)**  
 Insert Isolator key switch, push and turn 90 degrees
- 2 Isolate Machine**  
 Ensure the left isolation lever (A) is in the raised position
- 3 Disarm the Immobiliser**  
 If installed, use rotary to enter code
- 4 Start Machine**  
 Turn ignition key to the on position (3) and hold till engine starts
- 5 Lower Isolation Lever**  
 Ensure the left isolation lever (A) lowered to activate the hydraulics
- 6 Operate Machine**  
 All controls are now active and the machine is ready to use



## Excavator End Controls

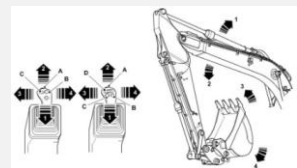
### Left Joystick (ISO)



1. Slew to the left
2. Slew to the right
3. Move dipper outwards
4. Move dipper inwards

- A. Auxiliary hold (proportional control only)
- B. Boom priority (if fitted)
- C. Horn
- D. Proportional auxiliary control high flow (option)

### Right Joystick (ISO)



1. Raise the boom
2. Lower the boom
3. Fill the bucket
4. Empty the bucket

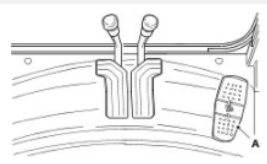
- A. Power boost
- B. Quickhitch
- C. One touch idle
- D. One touch idle
- E. Proportional auxiliary control low flow (option)

### TAB (option)



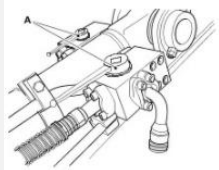
- A. Pedal
- B. Ram
- 1. Extend the ram
- 2. Retract the ram

## Auxiliary Circuit Controls



- A. Auxiliary control pedal

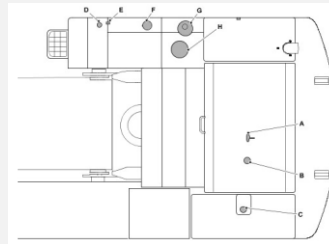
- A. Change-over valve (Bucket to grab option)



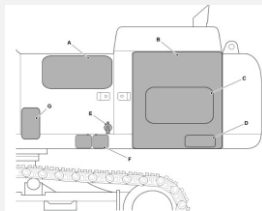
## Service Points

### Upper Structure

- A. Engine oil dipstick
- B. Engine oil filler cap
- C. Expansion bottle
- D. DEF filler cap
- E. Diesel level indicator
- F. Diesel fuel filler cap
- G. Hydraulic breather
- H. Hydraulic oil filler cap



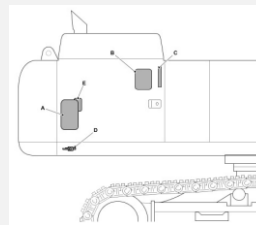
### Battery Compartment



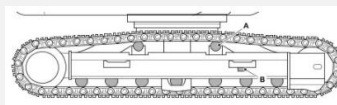
- A. Air intake
- B. Radiator(s)
- C. Condenser
- D. Fuel cooler
- E. Battery isolator
- F. Batteries
- G. Window washer fluid bottle

### Hydraulic Compartment

- A. Main fuel filter
- B. Hydraulic oil pilot filter
- C. Hydraulic oil level indicator
- D. Fuel tap
- E. Drain filter



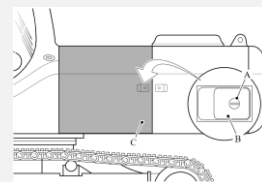
### Undercarriage



- A. Track rollers
- B. Track tensioner

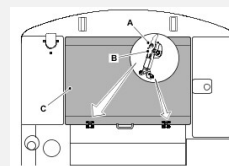
## Access Covers

### Battery Cover



- A. Lock
- B. Handle
- C. Cover

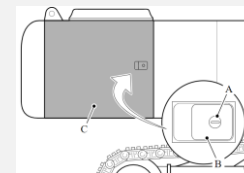
### Engine Compartment Cover



- A. Lock
- B. Handle
- C. Cover

## Access Covers

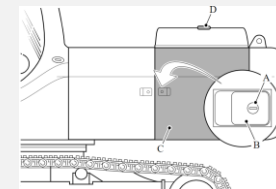
### Hydraulic Compartment Cover



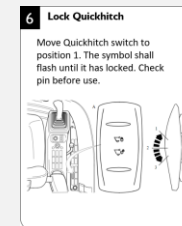
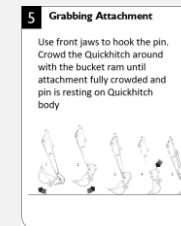
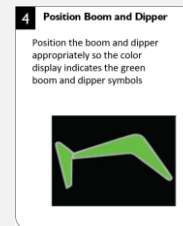
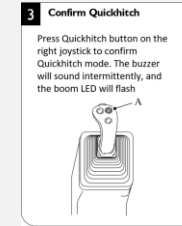
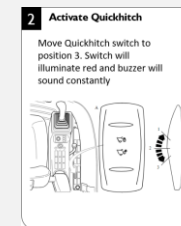
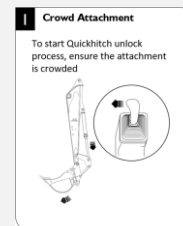
- A. Lock
- B. Handle
- C. Cover

### Radiator Cover

- A. Lock
- B. Handle
- C. Radiator Compartment Cover
- D. Expansion tank flap



## Hydraulic Hitch Unlock Sequence



## Lifting the Machine

- A. Spacer bars
- B. Lifting platform
- C. Lifting-hook height
- D. Angle = 75°

