



JS160, JS190

QUICK REFERENCE GUIDE

This Quick Reference Guide DOES NOT replace the Operators Manual. You MUST read ALL the disclaimers and safety and other instructions in the Operators Manual before initially operating this product. Accordingly, no legal claims can be entertained based on the data, illustrations or descriptions in this Quick Reference Guide.

Static Dimensions

Monoboam

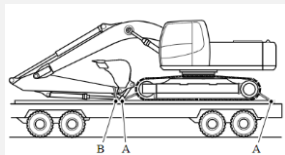
Machine model		JS160	JS190
A	Track length on ground	ft-in 10-2	11-1
B	Undercarriage overall length	ft-in 12-11	13-8
C	Track gauge	ft-in 6-6	6-6
D	Width over tracks (500 shoes)	ft-in 8-2	8-2
	Width over tracks (600 shoes)	ft-in 8-6	8-6
	Width over tracks (700 shoes)	ft-in 8-10	8-10
G	Counterweight clearance	ft-in 3-5	3-6
H	Tailswing radius	ft-in 7-8	7-8
I	Width of superstructure	ft-in 8-1	9
J	Height over cab	ft-in 9-9	9-10
K	Height over grab rail	ft-in 9-10	9-11
L	Ground clearance	ft-in 1-7	1-7
M	Track height	ft-in 2-11	2-11

Machine model		JS160		JS190	
	Dipper lengths	ft-in 7-5	8-10	7-5	8-10
E	Transport length	ft-in 27-4	27-3	27-5	27-5
F	Transport height	ft-in 9-10	9-10	9-11	9-11

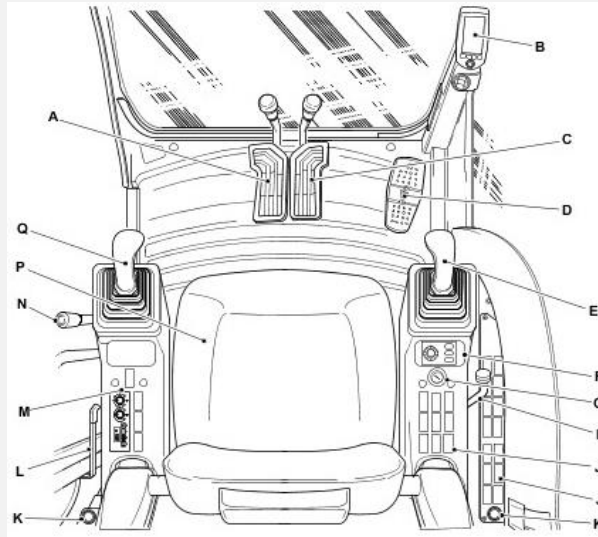


Tie Down Points

- A. Undercarriage securing method
- B. Dipper securing method



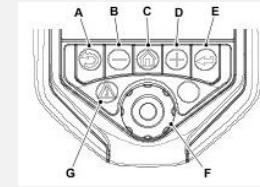
Cab and Switch Panel



- A. Left hand track control
- B. DECU
- C. Right hand track control
- D. Optional circuit pedal
- E. Right joystick
- F. Machine power band controller
- G. Ignition switch
- H. Dozer lever
- J. Right switch console
- K. 12V auxiliary power socket
- L. Door lever
- M. Left switch console
- N. Controls isolation lever
- P. Seat
- Q. Left joystick

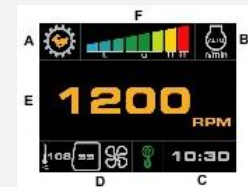
Instrument Panel

- A. Back button
- B. Minus button
- C. Home button
- D. Plus button
- E. Enter button
- F. Rotary control and select button
- G. Fault indicator

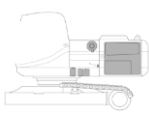
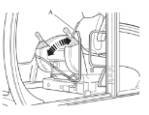

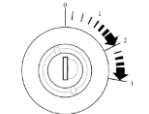

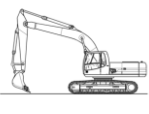


Operating Screen

- A. Travel speed
- B. Auto idle/Controls isolation
- C. Clock
- D. Inside/outside temperature, Fan speed, A/C
- E. Engine speed
- F. Power band



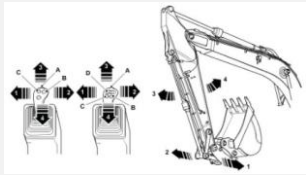
Start Up Sequence

- 1 Insert Isolator Key (E)**
 Insert isolator key switch, push and turn 90 degrees
 
- 2 Isolate Machine**
 Ensure the left isolation lever (A) is in the raised position
 
- 3 Disarm the Immobiliser**
 If installed, use rotary to enter code
 
- 4 Start Machine**
 Turn ignition key to the on position (3) and hold till engine starts
 
- 5 Lower Isolation Lever**
 Ensure the left isolation lever (A) lowered to activate the hydraulics
 
- 6 Operate Machine**
 All controls are now active and the machine is ready to use
 



Excavator End Controls

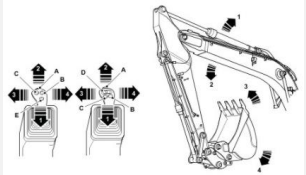
Left Joystick (ISO)



1. Slew to the left
2. Slew to the right
3. Move dipper outwards
4. Move dipper inwards

- A. Auxiliary hold (proportional control only)
- B. Boom/slew priority (if fitted)
- C. Horn
- D. Proportional auxiliary control high flow (option)

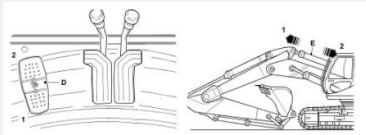
Right Joystick (ISO)



1. Raise the boom
2. Lower the boom
3. Fill the bucket
4. Empty the bucket

- A. Power boost
- B. Quickhitch
- C. One touch idle
- D. Proportional auxiliary control low flow (option)
- E. Travel speed selector (if fitted)

TAB (option)



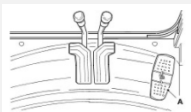
- A. Pedal
- B. Ram
- 1. Extend the ram
- 2. Retract the ram

Dozer Blade Controls

- A. Control lever
- B. Lower the dozer blade
- C. Lift the dozer blade

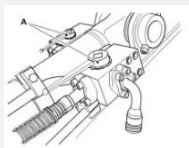


Auxiliary Circuit Controls



- A. Auxiliary control pedal

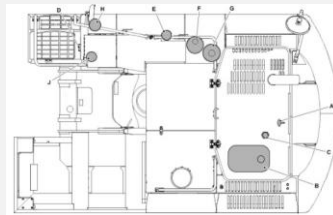
- A. Change-over valve (Bucket to grab option)



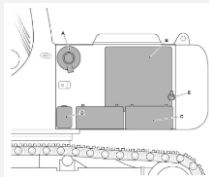
Service Points

Upper Structure

- A. Engine oil dipstick
- B. Radiator cap & expansion bottle
- C. Engine oil filler cap
- D. Diesel level indicator
- E. Diesel fuel filler cap
- F. Hydraulic tank breather
- G. Hydraulic oil filler cap
- H. DEF filler cap
- J. DEF breather filter



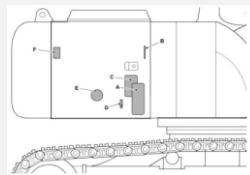
Battery Compartment



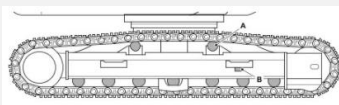
- A. Air intake
- B. Radiator(s)
- C. Batteries
- D. Window washer fluid bottle
- E. Battery isolator

Hydraulic Compartment

- A. Main fuel filter
- B. Hydraulic oil level indicator
- C. Engine fuel filter
- D. Fuel tap
- E. Engine oil filter
- F. Hydraulic oil pilot filter



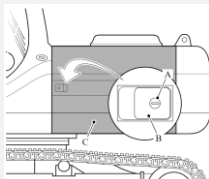
Undercarriage



- A. Track rollers
- B. Track tensioner

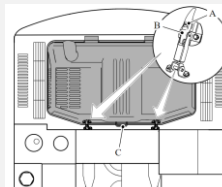
Access Covers

Battery Cover



- A. Lock
- B. Handle
- C. Cover

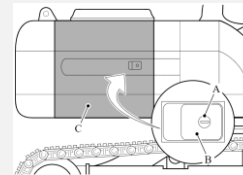
Engine Compartment Cover



- A. Lock
- B. Handle
- C. Cover

Access Covers

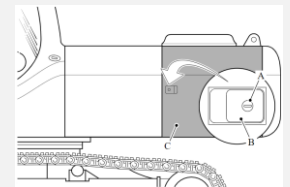
Hydraulic Compartment Cover



- A. Lock
- B. Handle
- C. Cover

Radiator Cover

- A. Lock
- B. Handle
- C. Cover
- D. Cap Cover



Hydraulic Hitch Unlock Sequence

1 Crowd Attachment
To start Quickhitch unlock process, ensure the attachment is crowded

2 Activate Quickhitch
Move Quickhitch switch to position 3. Switch will illuminate red and buzzer will sound constantly

3 Confirm Quickhitch
Press Quickhitch button on the right joystick to confirm Quickhitch mode. The buzzer will sound intermittently, and the boom LED will flash

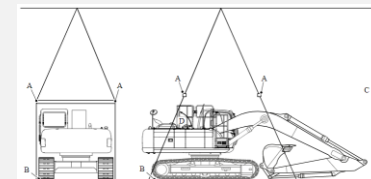
4 Position Boom and Dipper
Position the boom and dipper appropriately so the color display indicates the green boom and dipper symbols

5 Grabbing Attachment
Use front jaws to hook the pin. Crowd the Quickhitch around with the bucket ram until attachment fully crowded and pin is resting on Quickhitch body

6 Lock Quickhitch
Move Quickhitch switch to position 1. The symbol shall flash until it has locked. Check pin before use.

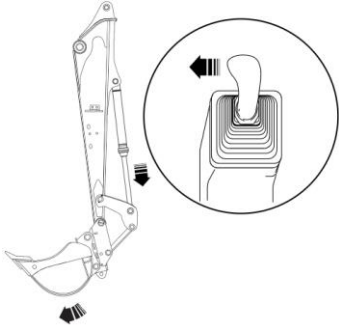
Lifting the Machine

- A. Spacer bars
- B. Lifting platform
- C. Lifting-hook height
- D. Angle = 75°



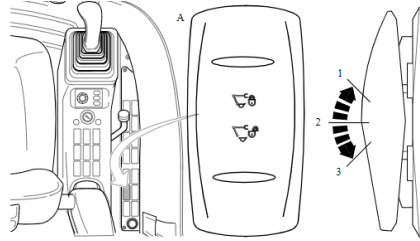
1 Crowd Attachment

To start Quickhitch unlock process, ensure the attachment is crowded



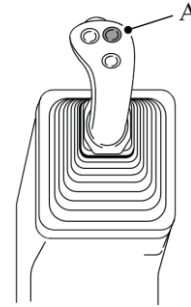
2 Activate Quickhitch

Move Quickhitch switch to position 3. Switch will illuminate red and buzzer will sound constantly



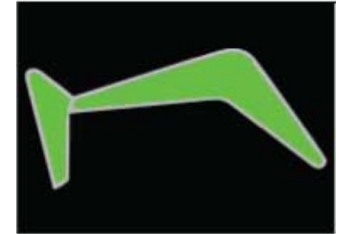
3 Confirm Quickhitch

Press Quickhitch button on the right joystick to confirm Quickhitch mode. The buzzer will sound intermittently, and the boom LED will flash



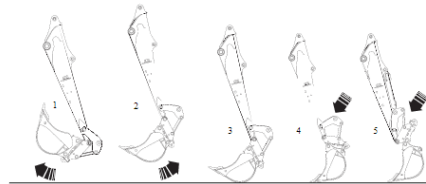
4 Position Boom and Dipper

Position the boom and dipper appropriately so the color display indicates the green boom and dipper symbols



5 Grabbing Attachment

Use front jaws to hook the pin. Crowd the Quickhitch around with the bucket ram until attachment fully crowded and pin is resting on Quickhitch body



6 Lock Quickhitch

Move Quickhitch switch to position 1. The symbol shall flash until it has locked. Check pin before use.

